

# Pipe Insert

**Creates a rigid, leak tight connection when fitting MDPE to a compression fitting**

## Overview

Always use a Speedfit Pipe Insert when connecting Speedfit MDPE fittings to a compression fitting. Inserts play a vital role in providing extra support to pipework, ensuring that the ends of the pipe are kept nice and round, and minimising any loss of shape that can occur when cutting.

Designed and manufactured in the UK.

## Features & Benefits

- Enhances sealing for a securer connection
- Maintains structural integrity of the pipe connection
- Compatible with MDPE pipes
- Suitable for cold water use only

Product code	Description	Size	Bag QTY
UTS147-DB	Cold Water Service Pipe Insert	20mm	10
UTS197-DB	Cold Water Service Pipe Insert	25mm	10
UTS251-DB	Cold Water Service Pipe Insert	32mm	2



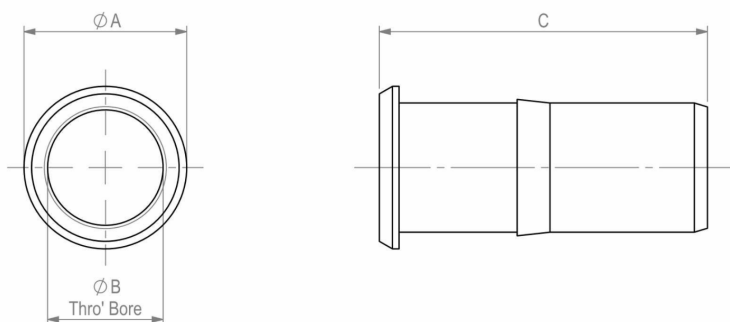
## Working parameters & specifications

Application	Usual working temperature °C	Maximum working temperature °C	Maximum working pressure, bar
Cold Water (indirect and direct mains)	20	20	16

## Materials

Body Polypropylene (Glass Filled), Black

## Dimensions – All measurements in mm unless otherwise stated



Part No.	Tube Size	Ø A	Ø B	C	Tube Wall Thickness
UTS147-DB	20mm	20.0 ± 0.25	13.0 ± 0.20	50 ± 0.5	2.3 to 2.6mm
UTS197-DB	25mm	25.0 ± 0.25	17.6 ± 0.20	50 ± 0.5	2.3 to 2.6mm
UTS251-DB	32mm	31.5 ± 0.25	19.0 ± 0.20	60 ± 0.5	3.0 to 3.4mm

