

Stop Tap MDPE x MDPE

Quick to connect screw down type, MDPE to MDPE mains stop valve

Overview

Speedfit push-fit MDPE to MDPE screw down mains valve instantly shuts off water. Simply push the valve fully onto the pipe. To demount, pull the collet towards the body of the fitting and pull the pipe to release.

Simply push the fitting fully onto the pipe. The connection is demountable, making it easy to work with in the ground when maintaining or altering an existing set-up.

Designed, manufactured and assembled in the UK.

Features & Benefits

- Instant push-fit connection and screw down mains stop valve
- Install and demount in seconds without tools
- Stainless steel teeth grab ring provides extra grip on the pipe
- Durable material with high impact resistance
- Non-toxic and no scale build-up
- Resists corrosion and biological growth
- Compatible with MDPE pipes only (inserts required)
- Suitable for cold water use only



Product code	Description	Size	Bag QTY
UGSTV2020	Stop Tap MDPE x MDPE	20mm	1
UGSTV2525	Stop Tap MDPE x MDPE	25mm	1
UGSTV3232	Stop Tap MDPE x MDPE	32mm	1



Stop Tap - MDPE x MDPE

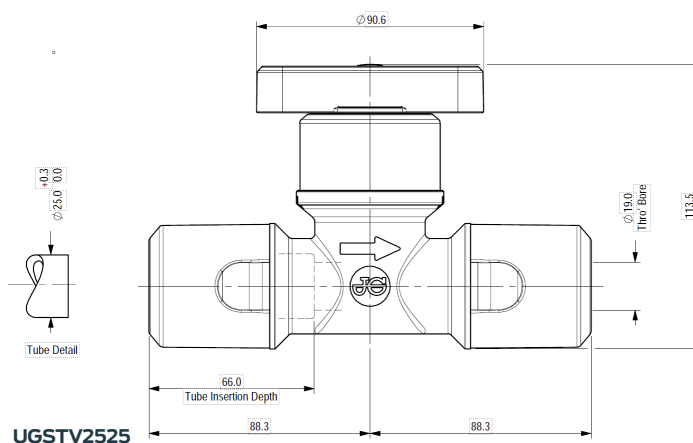
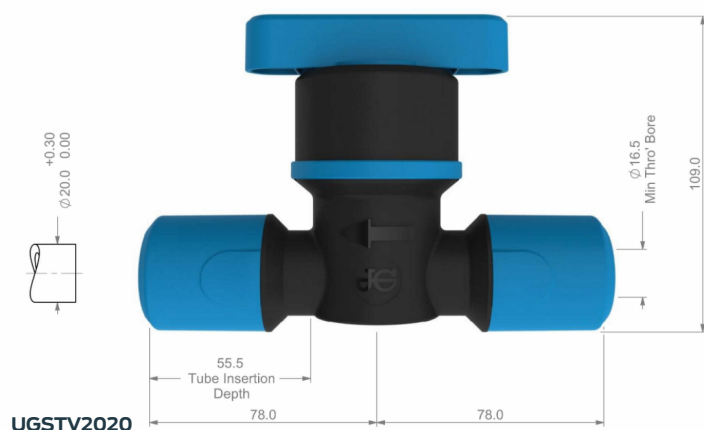
Working parameters & specifications

Application	Usual working temperature °C	Maximum working temperature °C	Maximum working pressure, bar
Cold Water (indirect and direct mains)	20	20	16

Materials

Body	Polypropylene (Glass Filled), Black
O-Ring	Ethylene Polypropylene Diene Monomer (EPDM)
Collet	Acetal Copolymer (Unfilled) Blue
Collet Teeth	Stainless Steel
Collet Cover	Acetal Copolymer (Unfilled) Blue
Support Washer	Acetal Copolymer (Unfilled) Blue
Spindle	Nylon 66 (Mineral Filled), Natural
Top Cover	Acetal Copolymer (Unfilled) Black
Locking Ring	Acetal Copolymer (Unfilled) Mid Blue

Dimensions – All measurements in mm unless otherwise stated



Working Pressures and Temperatures

Max Temperature 20 °C Max Pressure 16 bar

