

Grey Acetal Tube To Hose Stem Adaptor (Long Version)

Converts a John Guest pushfit connection, to a barbed hose connection.

Overview

John Guest grey push-fit acetal tube to hose stem (Long Version) fitting converts a John Guest push-fit connection to a hose type threaded connection. Fast and simple to install, John Guest push-fit fittings create an instant push-fit connection and leak tight seal without the need for tools, hot works or sealing agents.

The unique collet locking design firmly and securely holds the pipe in place without deforming the pipe or restricting flow. Fittings are corrosion resistant and fully demountable, improving system performance and reducing system downtime during maintenance.

Manufactured in grey push-fit acetal copolymer, the fitting is suitable for foodstuff, potable liquids and inert gases. In accordance with the British Beer & Pub Association Code of Practice, fittings can also be used with N₂/CO₂ and mixed gas dispense lines, as well as air, pneumatic and vacuum applications. All John Guest fittings are manufactured and assembled in the UK.



Features & Benefits

- Push-fit technology
- Quick disconnection without the need for tools
- Food Quality and suitable for potable liquids
- Suitable for soft metal or plastic tubes
- Suitable for air or inert gases
- Superior flow characteristics

| Product code | Description | Size | Bag QTY |
|--------------|-------------------|--------------|---------|
| PI251012SL | Tube To Hose Stem | 5/16" x 3/8" | 10 |
| PI251212SL | Tube To Hose Stem | 3/8" x 3/8" | 10 |



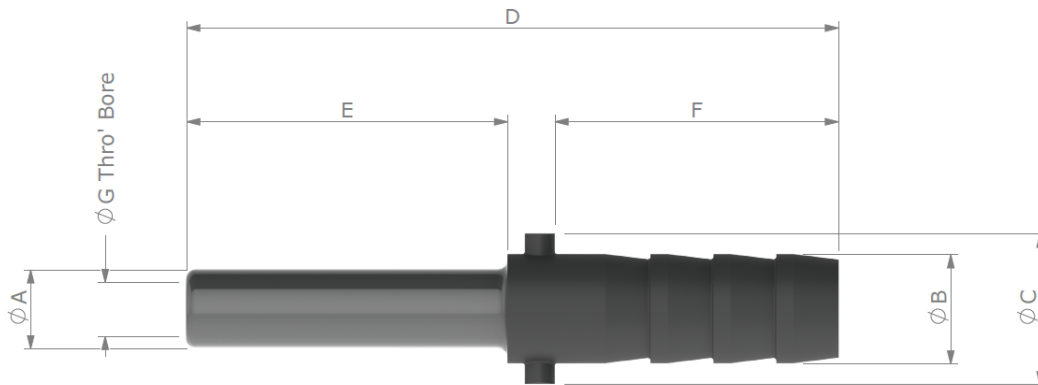
Grey Acetal Tube To Hose Stem Adaptor

| Application | Maximum working pressure, bar |
|-------------|-------------------------------|
| Air | 16 Bar |

| Materials |
|-----------------------------------|
| Body Acetal Copolymer (Unfilled), |

| Application |
|-------------------|
| Potable Liquid |
| Food Grade Liquid |
| Inert Gases |
| Vacuum |

Dimensions – All measurements in mm unless otherwise stated



| Product Number | Stem O/D to Hose I/D | A | B | C | D | E | F | G |
|----------------|----------------------|----------------|-----------------|----------------|----------------|----------------|----------------|---------------|
| PI251012SL | 5/16" - 3/8" | 5/16" [8.0] | 0.436 [11.1] | 0.60 [15.2] | 2.60 [66.0] | 1.28 [32.5] | 1.13 [28.7] | 0.21 [5.4] |
| PI251212SL | 3/8" - 3/8" | 3/8" [9.5] | 0.436 [11.1] | 0.60 [15.2] | 2.67 [67.8] | 1.35 [34.3] | 1.13 [28.7] | 0.26 [6.4] |