



Universal Connector

One connector.
Fits any multilayer pipe.



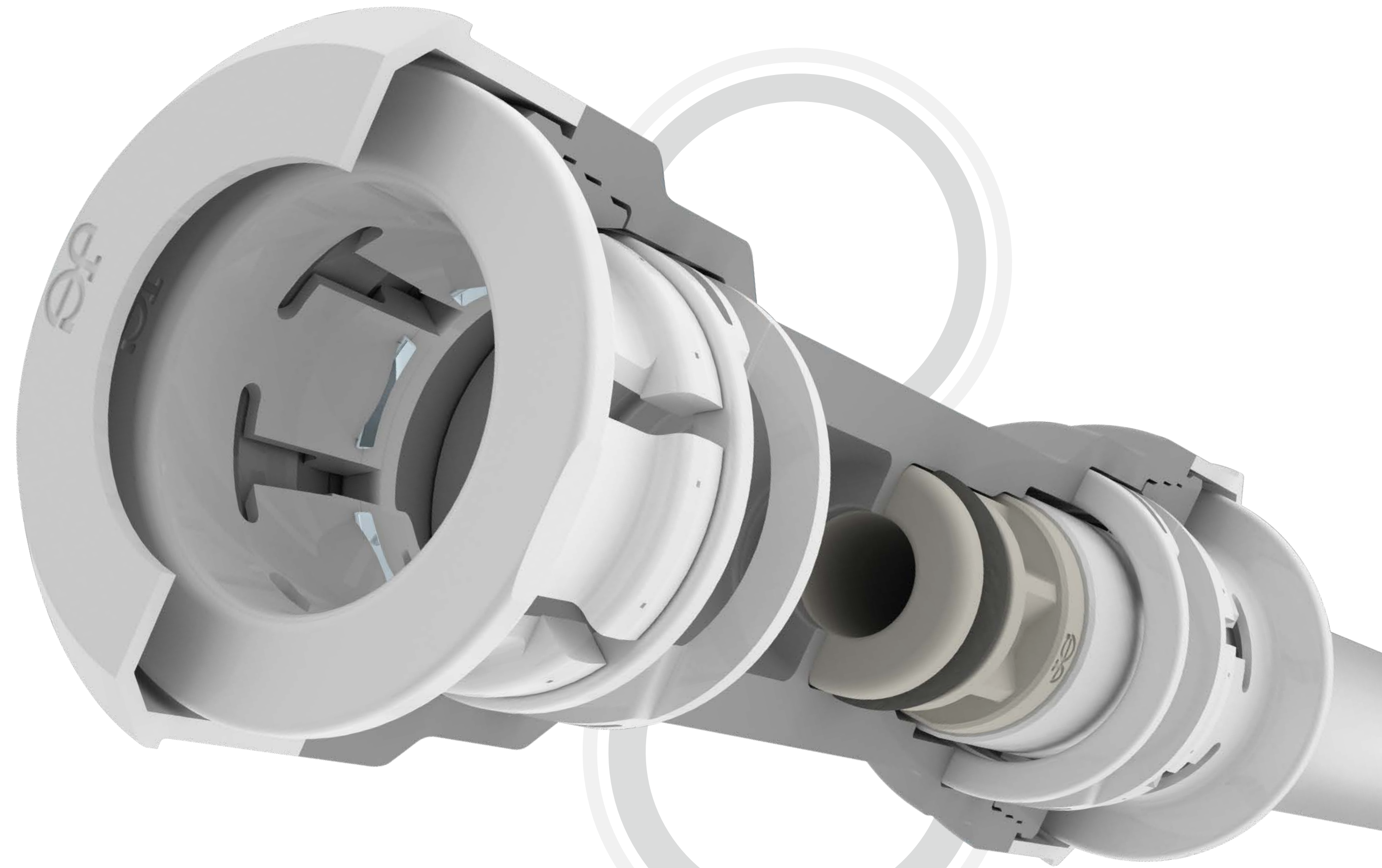
High standards, high performance

At John Guest, we've been creating groundbreaking products for over 50 years. Having recently joined the RWC family of innovative brands, we continue to build on our engineering legacy by developing plumbing solutions of the future.

We invest heavily in research and development, to offer you fittings that deliver world-class technical performance, with the high standard and reliability of our products having been recognised by industry bodies across the world.

This commitment to quality and innovation finds its latest expression in the new JG MultiLayer Universal Connector.

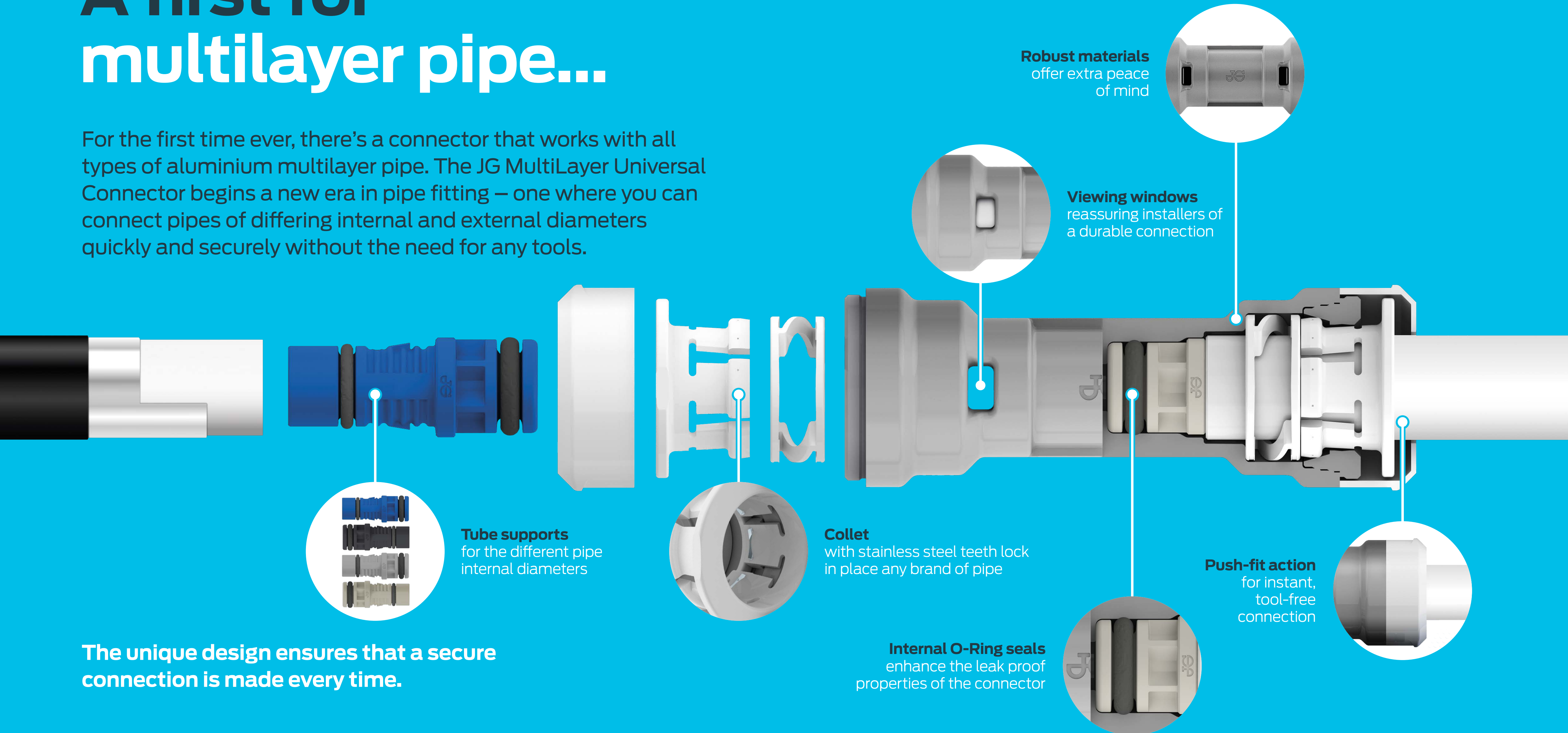
Try it for yourself, and begin a new era of pipe fitting today.



*against material defects

A first for multilayer pipe...

For the first time ever, there's a connector that works with all types of aluminium multilayer pipe. The JG MultiLayer Universal Connector begins a new era in pipe fitting – one where you can connect pipes of differing internal and external diameters quickly and securely without the need for any tools.



Robust materials
offer extra peace
of mind

Viewing windows
reassuring installers of
a durable connection

Tube supports
for the different pipe
internal diameters

Collet
with stainless steel teeth lock
in place any brand of pipe

Push-fit action
for instant,
tool-free
connection

Internal O-Ring seals
enhance the leak proof
properties of the connector

**The unique design ensures that a secure
connection is made every time.**

Available in three sizes: 16, 20 and 25/26mm

Universal Connector 16mm

Pipe ID 10.40 – 13.00mm

Tube supports	Pipe ID
Blue	12.30 - 13.00mm
Black	11.65 - 12.30mm
Light Grey	11.00 - 11.65mm
Cream	10.40 - 11.00mm

Outer pipe diameters:
min 15.80mm, max 17.20mm

Universal Connector 20mm

Pipe ID 13.85 – 16.00mm

Tube supports	Pipe ID
Blue	15.50 - 16.00mm
Black	15.00 - 15.50mm
Light Grey	14.50 - 15.00mm
Cream	13.85 - 14.50mm

Outer pipe diameters:
min 19.80mm, max 21.20mm

Universal Connector 25/26mm

Pipe ID 17.30 – 17.90mm/19.60 – 20.20mm

Tube supports	Pipe ID
Blue	19.60 - 20.20mm
Cream	17.30 - 17.90mm

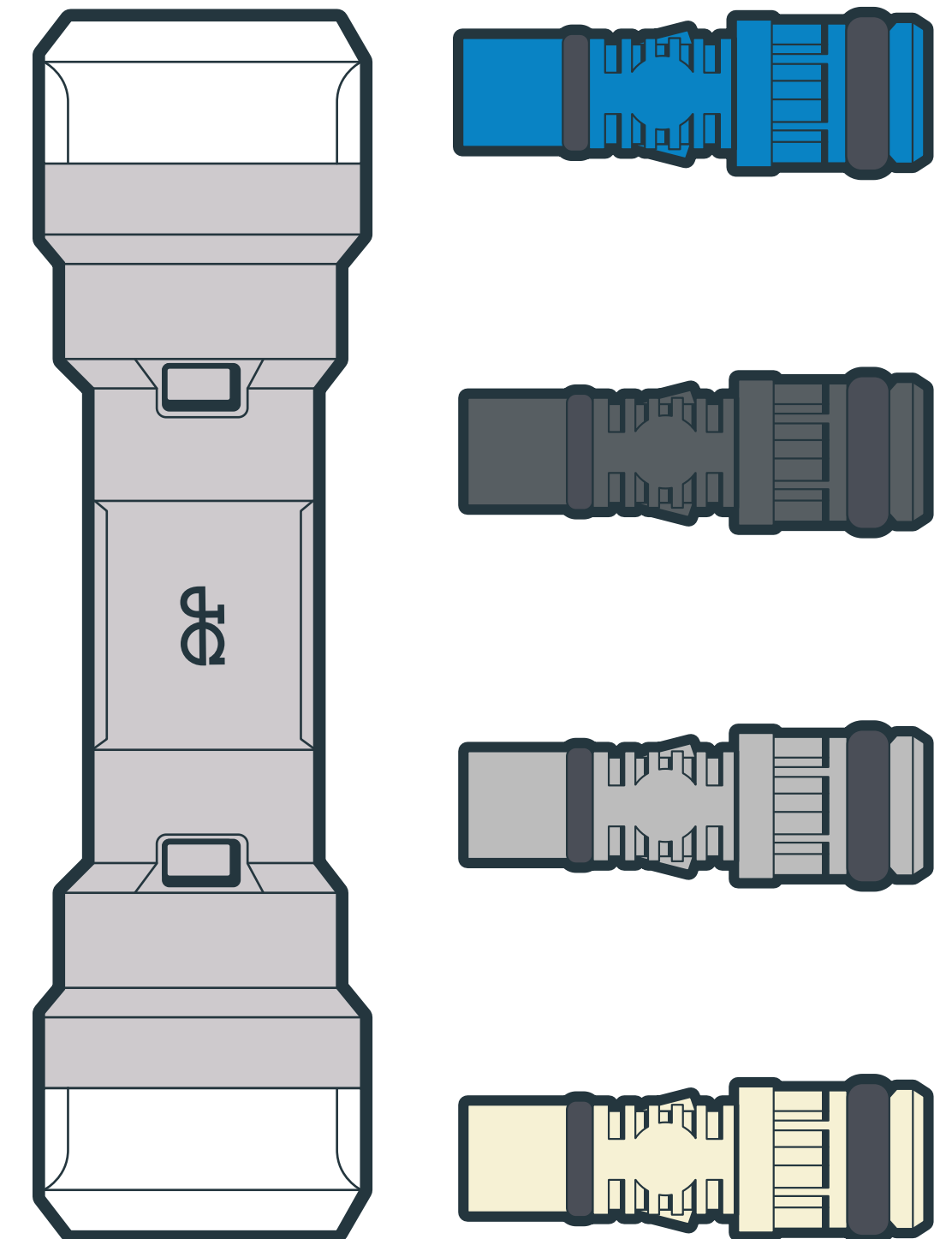
Outer pipe diameters:
min 24.70mm, max 26.30mm

Temperature and pressure tolerance

The Universal Connector can be used under varying temperature and pressure conditions, making it a versatile solution for a range of challenges.

Application	Normal working temperature, °C	Maximum working temperature, °C	Maximum working pressure, bar
Cold water	20	20	20
Hot water	70	80	10
Central heating	80	90 short-term malfunction at 100°C	6

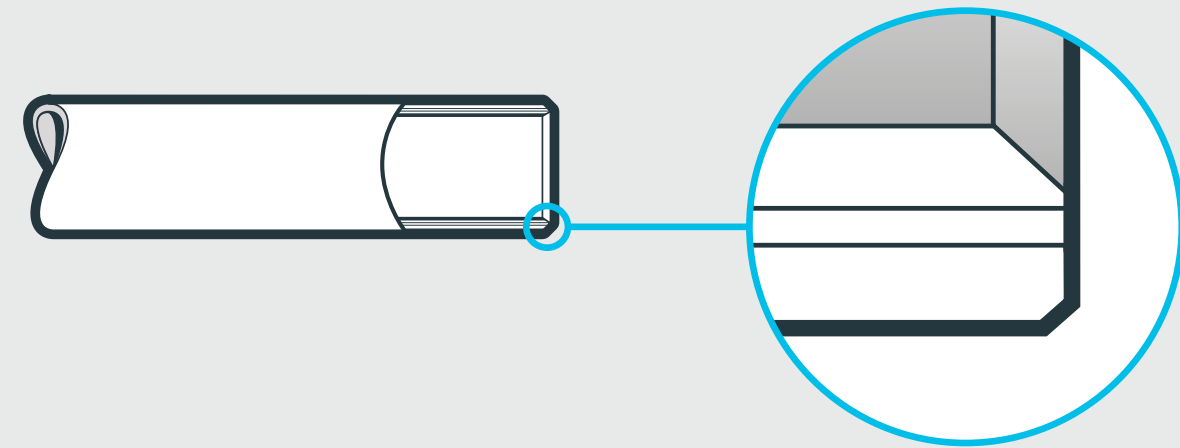
Complies with relevant clauses of DVGW W534 and DIN EN ISO 21003, as well as KTW and DVGW W270 regulations for drinking water.



How to fit

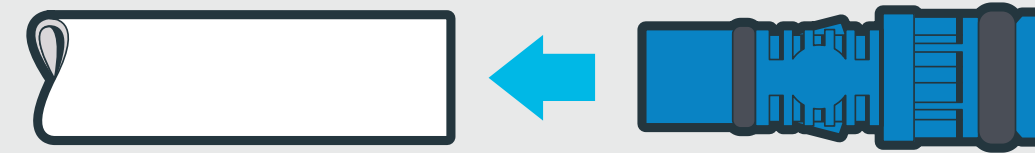
1 Prepare pipe

Cut the pipe square. Prepare the cut end using an appropriate pipe preparation tool, creating a lead-in on the tube ID. To prevent damage to the O-Ring, remove all burrs and sharp edges.



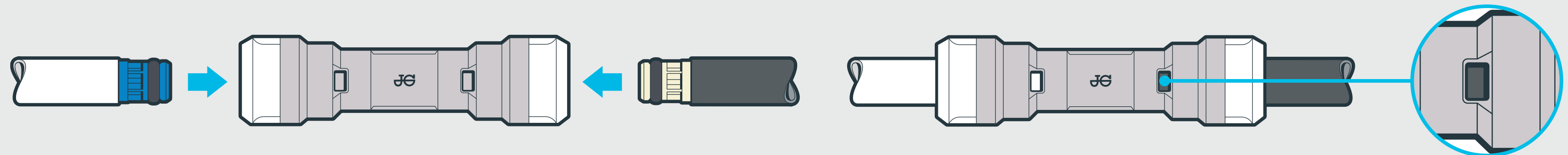
2 Select appropriate tube support

Select the tube support that best fits your pipe, ensuring a tight fit. Try the largest (blue support) first. If it doesn't fit, try the others in descending order. To insert the tube support, push it firmly into the pipe as shown below.



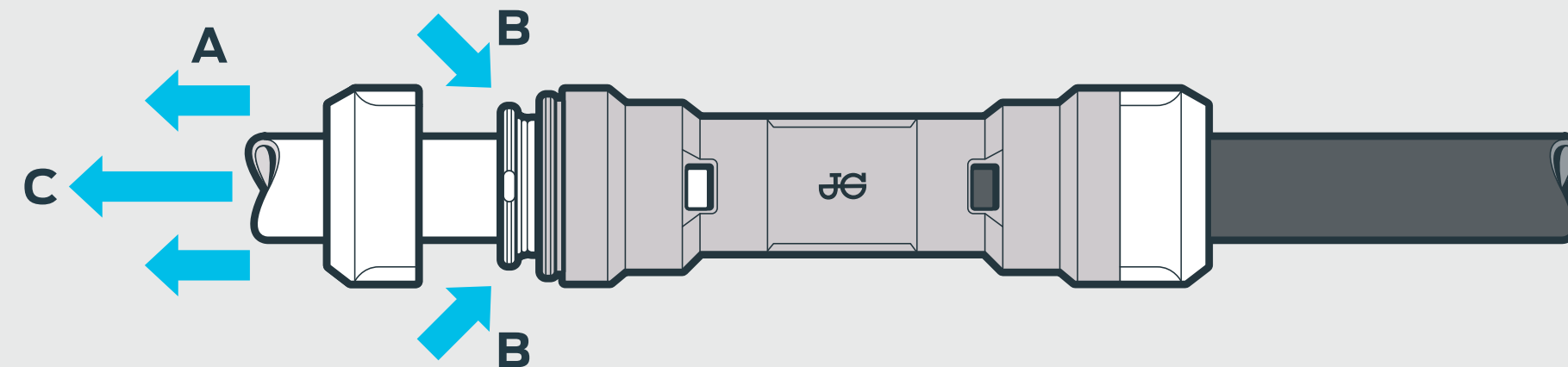
3 Insert pipe

Push the pipe into the connector, ensuring the tube support is fully inserted and pushed against the stop. When fully inserted, the pipe will be visible through the viewing window of the connector.



4 To disconnect

- A. Remove the collet cover from the connector
- B. Depress the collet head
- C. Remove the connector from the pipe





For more information please visit johnguestmultilayer.com, or give us a call to talk about trying the Universal Connector for yourself.

**Reliance Worldwide
Corporation (UK) Limited**
Horton Road
West Drayton
UB7 8JL
United Kingdom

Tel: +44 (0) 1895 449233

rwc.com | johnguestmultilayer.com

AN RWC BRAND
RWC